



# “CHALLENGES WE FACE TODAY AS A CHURCH”

The challenges for the church today are many and it is difficult to define which are the most troubling and threatening. Yet, I can say from my years as a servant of the church, the greatest difficulty usually boils down to two long-standing obstacles, with which pastors and church leaders continually strive to overcome. The Word of God encourages us, “Do you not know that friendship with the world is enmity with God? Therefore whoever wishes to be a friend of the world makes himself an enemy of God.” (James 4:4).

The first challenge involves compromise with the standards of the world. Unfortunately, the modern church seems to have been more influenced by society, rather than society being influenced by the church. This is a tragedy. For hundreds of years, the church has always had a positive influence on society. Not so anymore. Almost every poll will show that a majority of Americans profess to be Christians, but the general spiritual condition of our nation today has never been worse. Just watch local or national news. There is rarely ever good news reported. There reports are usually

filled with murder, corruption, scandal, and all kinds of sexual perversions.

Unfortunately many churches have concentrated on techniques, programs and a form of entertainment to get people in the doors, believing that church growth is the answer to all their problems. Nothing wrong with church growth, but the church has forgotten the scriptural program for growth when the Apostle Paul explained, “What then is Apollos? What is Paul? Servants through whom you believed, as the Lord assigned to each. I planted, Apollos watered, but God gave the growth.” (1 Corinthians 3:5-6). The strategies mentioned above have not proven to be successful. As a result, the spiritual condition of individual Christians as well as the church has been compromised.

For example, many churches or church bodies have departed from the historic scriptural teachings of the church. No wonder why people aren’t going to church. The church has been inconsistent in her teaching. The church has changed her historic doctrinal position from male pastors to gay

*(Continued on page 4)*

### Inside this issue

- Stewardship..... 2
- Message from the President..... 3
- Serving the Lord..... 3
- Pastors Message cont..... 4-5
- Aquila & Pricilla ..... 6-10
- From the Treasurer..... 7
- Volunteer Spotlight..... 11
- Prayer List..... 12
- Altar Guild ..... 13
- Announcements ..... 13-15
- Gallery ..... 16-17
- Redeemer Child Care ..... 18
- Classifieds..... 19
- Greeters & Coffee Hour ..... 19
- Puzzle Page ..... 20



## STEWARDSHIP

The greatest surprise about Easter is not that Jesus is alive, risen from the dead, out of the grave, that He conquered death and hell, and comes to meet you as He promised. The greatest surprise is that He did all that and is not angry. There is no fear for us in His return because He is not angry. He bears no grudge. He seeks no vengeance. He comes to give peace, with mercy and forgiveness and salvation.

Jesus lives and is not angry. Imagine that. He is not angry. He doesn't blame those who killed Him. He doesn't blame you. For no one takes His life from Him. He lays it down of His own accord. He gives Himself into death to win us back from sin, death, and hell. He does it willingly without coercion. He does it sacrificially, Him for us. He gave what was His to give. Thus His petition to the Father from the cross, "Forgive them" is granted to you in His resurrection. He comes alive out of death to forgive and to give His life to you.

There is nothing to be afraid of because Jesus is raised from the dead and is not angry. Thus we are free—free from worrying about how to make it up to Him, and free to give as He has given to us. He gave Himself as a gift, His life in exchange for our death, willingly and sacrificially. And so it is that we are now free to give in like manner: willingly, sacrificially, with what we have been given.

We give to the church because it is in the church where our eyes have seen and our ears have heard that Jesus lives and is not angry. It is here where we learn of God's mercy and forgiveness in Christ. It is here where we continually receive that message of life, where He visits us to give peace, with mercy and forgiveness and salvation.

So do not be afraid. Jesus lives, and He is not angry. The sacrifice has been made. The debt is canceled and forgotten. Righteousness is declared. Jesus lives. He lives, and He is not angry. You are restored. You are reconciled to the Father in the Son. Your future is assured: Jesus lives. It is not just death and Hell, the devil and his demons, that are undone. Your sins, your fear are undone. They are gone, forgotten, destroyed. Jesus lives. Hallelujah! Jesus lives. And because He lives, you are just. You are right with God, pleasing and delightful to Him. You are forgiven, clean, pure, holy, and filled with His good works and with His Name. He is not angry. He is glad to have you. He wants you. He loves you. He gave everything that is His to and for you, willingly and sacrificially. In faith and trust in Him, let us do likewise.



## FROM THE PRESIDENT

# Happy Easter! Christ has Risen.... He is Risen Indeed... Alleluia

It only seems like yesterday that Pastor Kress was beginning to welcome all of our Associate members and guests for the winter season. Unfortunately, we are already saying our good byes to many of our friend from the north. We wish you all God's Blessings as you travel back to enjoy the beautiful summers up north.

For those that are still here and for our regular members, you need to take a few moments to look at the new flooring in Fellowship Hall. It is simply beautiful! What a difference a new floor makes! The final touch will be in a few weeks when both of the bathrooms are finished.

I would like to sincerely thank those that contributed to the new flooring project. As many of you read in the recent bulletin, we have started a paint the church (outside) fund and it already has almost \$3000 in it. What a great way to give thanks and praise to the glory of Our Father in heaven.

Blessings,  
STEPHEN



## SERVING THE LORD

Pastor Rev. James Kress

Seasonal Pastor

LHM Ambassador

Child Care

Director

Wendy Horvath

Office Secretary

Deb Horner

Organist

Bill Bowers

Choir Director

Collins Sita

Newsletter

Editor

Deb Horner

## OFFICERS

President

Stephen Wurster

Vice President

Terry Fountain

Treasurer

Denise Fountain

Secretary

June Brown

## BOARDS

Head Elder

Christian Ed.

Pam Replinger

Human Care

Outreach

Cindy Johnson

Assimilation

School Board

Bill Bowers

Stewardship

Rev. Mark Steinke

Youth

James Straw

Financial

Secretary

Deb Horner

Property Mgmt.

Jim Metzger

## GROUPS/GUILDS

Ladies Guild

Sally Zierdt

Men's Group

Altar Guild

Coffee Hour

## “CHALLENGES WE FACE TODAY AS A CHURCH”



*(Continued from page 1)*

and lesbian pastors, from one man-one woman marriage to same sex marriage, from the sanctity of life to the quality of life, from pro-life to pro-choice, from closed communion to open communion, and the list goes on and on and on. The Apostle Paul said, “Beloved, let us cleanse ourselves from every defilement of body and spirit, bringing holiness to completion in the fear of God.” (2 Corinthians 7:1).

Redeemer Lutheran Church, her pastors, leaders, and members strive to remain faithful to the historic teaching of Holy Scripture. The Lutheran Church Missouri Synod also attempts to remain faithful to the Word of God and the Confessional standards as contained in the Book of Concord. We are not perfect – no church on earth is – however we endeavor to remain faithful to the Word of God. As Luther’s old hymn goes: “Lord keep us steadfast in your Word; curb those who by deceit or sword would wrest the kingdom from Your Son and bring to naught all He has done.” (LSB 655 st. 1).

We might all agree then, that there is a widespread absence in the basic elements of Christian character, ethics and morality in the church. In stark contrast to previous generations, statistics show that the ratio of moral dysfunctions among professing Christians today closely parallel that of secular society. Domestic violence, drug abuse, alcoholism, sexual immorality, addictions, and promiscuity are commonly found within the populace of the church. In the 1980’s (only 30 years ago), the Christian divorce rate reached the same deplorable level as that of secular marriages. Today more than 50% of all

marriages, including those of professing Christians, result in divorce. Not only that, but there are more and more couples today who avoid marriage and are content to simply live together (cohabitate), thus raising their children in an environment foreign to God’s design.

Contributing to this ever growing problem is the fact that pulpits are virtually silent on the issue of “sin” and the “consequences of unrepentant sin.” The church has unfortunately become more and more like the world. It has sought to be popular and acceptable to society, and in doing so, it has compromised its standards of teaching, morality, and ethics. God’s Word warns us, “Do not love the world or the things in the world. If anyone loves the world, the love of the Father is not in him” (1 John 2:15). So, the pastors behind the pulpits need to preach repentance for the forgiveness of sins. Both Law and Gospel must be proclaimed. Feel good stories from the pulpit masquerading as sermons will not cut it.

The second challenge the church has today is apathy toward its mission in the world. By and large, the modern church world has become mostly occupied with what God can do for them, rather than remembering their mission to reach out to the lost for Christ. We live in a very self-centered society, and rarely do we see churches and believers laying aside their selfish interests to serve the Lord’s mission. The Apostle Paul also warns us saying, “Understand this, that in the last days there will come times of difficulty. For people will be lovers of self, lovers of money, proud, arrogant, abusive, disobedient to their parents, ungrateful, unholy, heartless, unappeasable, slanderous, without self-control, brutal, not loving good, treacherous, reckless, swollen with conceit, lovers of pleasure rather than lovers of God, having the appearance of godliness, but denying its power. Avoid such

*(Continued on page 5)*

## “CHALLENGES WE FACE TODAY AS A CHURCH”

(Continued from page 4)

people” (2 Timothy 3:1-5).

The scriptures make it very clear that it is the duty of every Christian to take on the task of helping to bring people to the saving message of Christ. “If anyone is in Christ, he is a new creation. The old has passed away; behold, the new has come. All this is from God, who through Christ reconciled us to Himself and gave us the ministry of reconciliation; that is, in Christ God was reconciling the world to Himself, not counting their trespasses against them, and entrusting to us the message of reconciliation. Therefore, we are ambassadors for Christ, God making His appeal through us.” (2 Corinthians 5:17-20a).

Unfortunately, only a tiny percentage of Christians ever attempt to share their faith with others. This dispiritedness is inexcusable and has contributed to the woes of our society, which can only be remedied by the new birth of Christ in the hearts of sinful men and women. “Even if

our gospel is veiled, it is veiled to those who are perishing” (2 Corinthians 4:3).

But do not lose heart my friends. Before His crucifixion, death, burial, and resurrection Jesus prayed to His Father saying, “I am no longer in the world, but they are in the world, and I am coming to You. Holy Father, keep them in Your name, which You have given Me, that they may be one, even as We are one” (John 17:11).

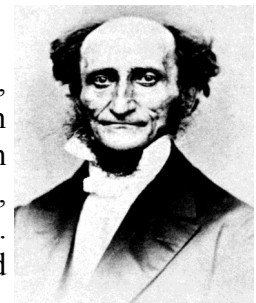
The church will continue to have challenges, many challenges. The question we need to ask ourselves is: Am I contributing to those negative challenges or am I making an effort to change the deplorable corruption in our society by remaining true to the Word of God? The answer to that question is knowing you’re hearing the Word of God and receiving the body and blood of Jesus frequently and faithfully on Sunday mornings.

Yours in Christ Jesus,  
Pastor Jim Kress

### C. F. W. WALTHER

#### First President of the Lutheran Church Missouri Synod

In regards to the Office of the Holy Ministry, C. F. W. Walther, from his book, *God Grant It*, writes: O, glorious office! No matter how sick a person may be in his soul, the Gospel can heal him. No matter how deeply a person has fallen into the corruption of sin, the Gospel can pull him out. No matter how troubled, frightened, and afflicted a person may be, the Gospel can comfort him. Whatever the condition in which a person finds himself, even if he is convinced that he must perish because of it, the preachers can confidently oppose him, saying: “No, as certainly as God lives, He does not what the death of any sinner. You shall not perish; instead, you shall be saved. Turn to Jesus, who can evermore save all who come to God through Him.” And if one who lies near death calls out: “God, what have I done? Woe to me! Now it is too late! I am lost!” the preacher calls to him: “No, no, it is not too late! Commit your departing soul to Jesus. You too shall still be with Him in paradise today.” O, glorious, high office, too high for the angels! May we always hold it in high regard, not looking at the person who bears it and despising his weakness, but looking instead at the Institutor of this office and His exuberant goodness. Let us turn to Him in faith so we can experience the blessings of which the preachers have spoken and, through them, be gathered together one day into the barns of heaven as a completely ripe sheaf. – C. F. W. Walther, *God Grant It*, pp. 679-80. Copyright © 2006 Concordia Publishing House.



## TRAVELS OF AQUILA AND PRISCILLA

**D**ear brothers and sisters in Christ, God sure has blessed us with an amazing beautiful country. We have yet to reach the the point at which we are not awed by one more spectral vista or tree, rock formation, plant, bird or animal that we have not seen before. It is so hard for us to understand that there are so many people that can not see God's hands in everything around us.

After Death Valley we headed for the Pacific Coast. Through miles and miles of flowering orchards. It seems that this whole area of California is in bloom. Wild flowers every where. One can even see Easter Lilies and daffodils blooming in the wild.

We chose San Luis Obispo as our base to explore this part of California. SLO as it is called by the people in the area is a quaint college town. From here one can go visit the Hearst Castle which took twenty years to build. It is a lovely place to visit. The grounds are picture perfect. The swimming pools hold enough water which could probably supply the needs of a small town. Just think ladies if you had this place you would only to be concerned about 165 rooms.

The south end of California HWY 1 hugs the coast with an amazing vista at each turn. February is the mating time for elephant seals. We were fortunate enough to see several hundred of them on the beach. These are big animals. The males weigh about 5000 lb., females 1200 lb. and the babies are weaned at about 500 lb.. Seals eat about 4 to 5% of their body weight daily. That's a heck of a lot of fish and squid they must eat to maintain those bodies.

If you enjoy seafood. There is a small town called Morro Bay where you can watch fishing boats delivery their catch, and see it packed and put on trucks while you are enjoying the catch of the day. Since you are eating on the

dock you can see California seals and sea otters doing their thing. It is funny watching otters. They seem to enjoy shell fish. They swim to the bottom and come up with a rock and a clam. They roll on their backs on the water. Put the rocks on their chests and smash the clams on the rock.



Now the real reason we went to SLO is because of Paso Robles. You see there is something about fermented grape juice that appeals to Aquilla. For many years the Paso Robles area has produced wine. However, much of this wine was bulk wine. In other words, less expensive wines and blending type wines. Over the last ten years people have become more interested and knowledgable about wines and are willing to pay for a better quality wine. Wine makers have started new vineyards in this area and are producing wines to meet this demand. We want to assure you that our visit was just a research mission and the fact that these establishments have tasting rooms had absolutely no affect in deciding to undertake this mission.

Here is some wine trivia: 1 grapevine grows 18 pounds of grapes, 1 grapevine makes 6 bottles of wine, 1 acre grows 450 vines, 1 acre grows 4 tons of grapes, 1 acre makes 225 cases of wine, 1 bottle pours 5 glasses of wine and 1 case includes 12 bottles.

We continued our drive up the coast with the intent of staying in Monterey. All the hotels were booked so we traveled to Salinas, (salad bowl of the nation) about twenty miles east of Monterey. We checked in to the Hotel in the Hood. You know the kind where you ring a bell in order for the clerk to buzz you in and of course he's behind a bullet proof window. In

*(Continued on page 7)*

## TRAVELS OF AQUILA AND PRISCILLA

(Continued from page 6)

the course of checking in the clerk asked if we were there for AT&T. Having no clue what he was talking about we said no.

Next day we drove into Monterey to do the scenic 17 mile drive and couldn't figure out how to get on the drive. We stopped at the chamber of commerce for directions. The first thing the woman at the desk asked, are you here for shuttle tickets? We said no, just for directions for the 17 mile drive. She said it's closed for AT&T. We said, what's this with AT&T. She was amazed that we didn't know about AT&T. We guess all you golfers know all about AT&T.

The coast is real pretty in Monterey and we had a great time walking around the wharf and eating dinner on the wharf.

Next on our agenda was Yosemite National Park. The view from the tunnel is a marvel to see. You have the Yosemite valley below you, El Capitan on the left, Bridalveil Fall and the Cathedral Spires on the right. You can even see Half Dome in the distance. In the early Spring there are numerous of waterfalls. Bridalveil and Yosemite were are favorite. The redwoods are a sight to behold.

We enjoyed the hospitality of Aquila's nephew Michael, his wife Jean and her son Michael in their home in the hills of Auburn. They have a beautiful home on 10 acres. In the evening we saw a number of black tailed

deer and in the morning a flock of turkeys. First time we ever had seen turkeys fly.

Aquila decided it was time to do some more research so we headed to the Napa and Sonoma Valleys. After two days of hard research we decided we needed a break. We went to Fisherman's Wharf in San Francisco where we had an enjoyable time watching the sea lions at pier 39. Dining at one of the restaurants on the wharf and of course getting our ice cream and chocolate fix at Ghirardelli's.

The following day we spent with Aquila's niece Odette, her husband Ed and daughter Tami. Odette and Ed live on a lovely two acre hobby farm in Sebastopol, complete with 8 laying chickens they rescued from the humane society and an apple orchard. After a wonderful brunch prepared by Odette we went on a research mission to their favorite winery.

Ukiah was our base for the next phase of our trek as we continue north along California HWY 1. The San Andreas Fault has been to the east of us for sometime now but we passed over it as it has followed it's way into the Pacific. The coastline is now is a lot more ragged. There are many more hairpin turns and each one revealing one more eye popping vista. We have seen several tule elk, a seal lion rookery with hundreds' of seals, a tom wild turkey, (After seeing that magnificent

(Continued on page 8)

## FROM THE TREASURER



February 2016:

<u>ACTUAL</u>		<u>BUDGET</u>		<u>OVER/(UNDER)</u>
INCOME:	\$21,364	INCOME:	14,419	\$6,945
EXPENSE:	\$13,134	EXPENSE:	\$15,631	(\$3,050)

## TRAVELS OF AQUILA AND PRISCILLA

*(Continued from page 7)*

bird we can see why Benjamin Franklin wanted the turkey to be our national bird.) thick red wood forests, open range grazing lands and many different types of flowers along the road.

From Ukiah we continued north on California HWY 1 to Eureka our next base of exploration. What a drive this is, one moment your driving along the coast watching the waves crashing into the jagged rock bluffs and shortly there after your deep in a redwood forest. So dense it blocks out the sun light. Some of the trees are huge, the biggest has a 22 ft. diameter trunk, (That's at breast height.) tallest is about 365 ft. tall.

We decided to leave the coast and explore some of Northern California's interior. Next stop was Yreka. No we are not making up these names.

Getting from Eureka to Yreka was not what you may call a carefree drive. You may recall we said the Apache Trail drive in Arizona was challenging. Well this drive goes well beyond that description. Basically it is a paved highway, two way traffic, most of the time it is a two lane road, for pretty long segments, maybe a lane and a half wide, which some times becomes only one lane wide, with chunks of the lane missing because they have fallen down into the abyss below. Blind turns ever few hundred feet, with the occasional remunerates of landslides and rock slides just to make it more interesting. In those portions of the road one just prays that no one is coming from the other direction. Aquila's finger's were so tightly attached to the steering wheel that when we got back on a normal highway he almost had to pry his fingers off the wheel. His hands tingled for awhile until blood started to recirculate through his hands. Talk about a white knuckle event this was IT!. It was an awesome,

beautiful drive but also very, very tense.

From now on we are not going to allow Geraldine, our GPS guide us without checking maps first.

After a wonderful and relaxing stay in Yreka we visited the Lava Beds National Monument where we went into a cave which at one time was a lava chute. Priscilla had to have her shoes disinfected by a park ranger since she had wore them in some caves that we had visited earlier in our trek. There is some sort of fungus that kills bats and that is a way of them protecting unaffected caves. Not learning from our experience at the Enchanted Rock in Texas we decided to climb a 900 ft butte over a .7 mile trail. It took us awhile but we made it. The views were great. Got some great shots of Mt. Shasta. We passed by Tule Lake which at one time was called the Everglades of the west. Then it was 100,000 acres now it is only 10,000 acres due to human activity. Passed a herd of black tail deer grazing like cattle in a pasture.

We visited McArthur-Burney Falls Memorial State Park. In this park are probably the prettiest falls we have seen thus far. The water for these falls travels through under ground rivers and only comes to the surface about a mile before the falls. Water can be seen coming out of the rock walls at the falls. Total water flow is about ten million gallons of water per day. Since most of this water is snow melt, one has to wonder how many snow flakes are needed to produce that much water.

The first week of March is probably a little to early in the year to visit Crater Lake National Park. While driving on the park road it was like driving through a canyon of snow. They use rotary snow plows here so you have straight 8 to 10 feet high walls of snow on

*(Continued on page 9)*



## TRAVELS OF AQUILA AND PRISCILLA

*(Continued from page 8)*

each side of the road. Park Ranger told us the snow base is about 96 inches. Unfortunately, the rim road was buried under 8 feet of snow. The only view of the lake we had was through a second floor window in the gift shop and we did manage to climb over a snow bank and walk on it to get a better view of the lake. It felt kind of weird knowing you were walking on top of 96 inches of snow. The lake is beautiful, it's the deepest lake in the USA 1,943 feet. Since it has no streams or rivers flowing into the lake and the lake depends only on the snow and rain directly falling in it and it's surrounding stone walls, it contains the clearest, (visibility close to 100 ft.) purest and cleanest water one can find. Because of the clarity of the water, the lake has an amazing blue color. It maintains it's water level due to evaporation and water seepage through the rocks.

We decided best to get out of the snow and back to the coast where the temperatures are more to our taste. On the way west to the coast we picked up US 199 in Medford Oregon.

What a drive that is from Medford to Crescent City California. Its a two lane highway through the Klamath Mountains, that takes you through redwood forests so dense that the tree canopies give you a feeling like your traveling through many very long tree tunnels. The road parallels mountain streams and raging white water rivers. Numerous waterfalls cascade off the mountain sides.

In Crescent City we picked up US 101 for a drive up the Oregon coast. The coast varies from very rugged rock formations with waves crashing into them to very long stretches of long sandy beaches with huge waves rolling on to them. Several stretches of sand dunes with one stretch having a 400 ft. high sand dune. We noticed a number of shops rented

sand boards. We guess people slide down the dunes on them.

Driving along we saw a sign for an elk viewing area. What a site to see. For some reason a large herd of elk uses this marsh to get together. The interesting part is all the females are in one bunch busy grazing and the males are about a quarter of a mile away mostly laying down.

For the most part the towns along the coast are pretty neat with the old type of main street. Kind of what you see in New England fishing towns. Just about every town has at least one chowder house. Coffee is big up here. There are expresso shops just about everywhere. Some drive thru's not much larger than a 5' X 10' shed. We think the reason for all the expresso drive thru's, is there aren't to many sunny days up here and the people need something to perk them up.

It appears that along US 101 the main industries are timber, fishing and tourism.

We visited Fort Clatsop where they have a replica of the fort Lewis and Clark built where their expedition spent the winter of 1805 after reaching the Pacific. The replica is exactly on the same spot that Lewis and Clark had used. One interesting note for us was that their care for details was such that the maps that Lewis and Clark made using the surveying instruments of that time had only 40 miles in error as compared to our maps of today in their 4000 mile journey.

Woke up this morning to hearing the waves rolling up on a the beach and below our hotel window a black tail doe and her yearling were grazing.

We continue along the Olympic Peninsula to see Lake Crescent, a 624 foot glacier lake. It has a deep brilliant blue color because it lacks

*(Continued on page 10)*

## TRAVELS OF AQUILA AND PRISCILLA

*(Continued from page 9)*

nitrogen and algae can not grow. We must be getting in better shape since we undertook a 1.6 mile hike to climb up to see Marymere falls. The first .6 miles is a gradual incline but the last .2 miles is a huffer and puffer. This hike includes going over two bridges one of which is just a log on which a flat surface was cut. It did have railings which made us feel more comfortable. Normal time for this hike is 90 minutes. We did it in 70 minutes and that included several stops for pictures and letting our breath catch up to us. The Olympic Peninsula gets about 200 inches of rain per year. Many of the trees and rocks are covered with moss. The forests are mainly Spruce, Cypress, and Birch. Since the forests are so dense little sunlight reaches the forest floor yet there is a variety of vegetation. Primarily ferns, big ones and little ones. Of particular interest to us were the little ones because they grow amidst the moss and they are just a little taller than the moss.

Ever had one of those days that nothing works out the way you planned. Well, we had one of those days in Port Angeles WA. We had planned to go out to Cape Flattery, the northwest most tip of the 48 and on the way see an old wooden bridge with great views of a mountain rushing stream. Well the old wooden bridge has been replaced by a new modern concrete steel bridge. In process of building the bridge we believe the stream was altered somehow because it really was not very impressive. After driving 50 miles ten miles just short of Cape Flattery we could not go any further since we had to go through the

Makah Indian Reservation and they don't allow any alcohol of any type in the reservation and we had some wine in our van. In addition, it started to rain very hard which made it very difficult to do any hiking and take advantage of some of the trails. On the way back to Port Angeles we decided we just wanted a grilled cheese sandwich and a cup of soup for lunch. Well, Geraldine led us to two cafes. One was in a bowling alley, the other was just closing for the day. Instead of getting what we had planned, we got a wonderful drive along the shore line. Sometimes right next to the beach watching the waves roll unto the beach and sometimes looking down from a bluff watching the waves crash into the rocks. Sometimes through dense forest and at times passing through grassy areas. We saw two different herds of Elk grazing and our soup and sandwich lunch turned out to become a real great seafood dinner in a restaurant overlooking the harbor. Not a bad day for not turning out as planned.

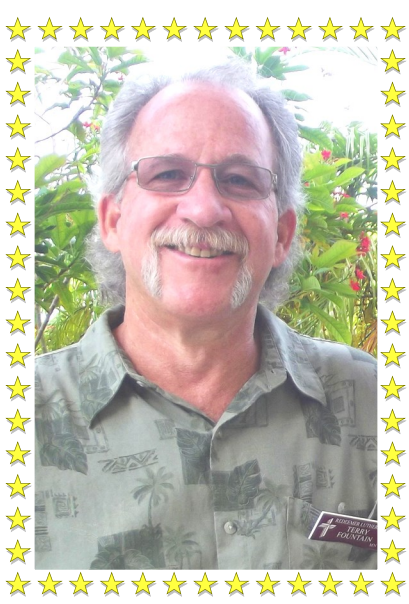
Today for the first time in our lives we saw a complete beautiful rainbow on the Strait of Juan de Fuca. That is the body of water between the Olympia Peninsula and Vancouver Island. Sorry for all those leprechauns out there, we did not see a pot of gold at either end. But we did remember a promise that was made to all of us.

We have completed our drive north on US 101.

May God continue to shower each and everyone of us with his Blessings.



# VOLUNTEER SPOTLIGHT OF THE MONTH



This month we shine the volunteer spotlight on Terry Fountain. He gives of his time and talents in so many ways. Although you have visibly known him as our Vice-President, Terry also is heavily involved with our Board of Church Properties helping Jim Metzker in his new position as chairman. Terry also answers many of the calls from our Child Care Center in need of his experience fixing this and that. Many of the kids have become familiar with him and call him Mr. Fountain. When the little children call his name, Terry’s face lights up. So, if you want to see Terry smile, call him Mr. Fountain. Terry, along with his wife, Denise, are quiet workers, that is, they have done so much for Redeemer, they have requested that I not mention that they personally cleaned and reset all of our white Redeemer signs that border our property on the corners of Mayport & Boca Grande, Boca Grande & Mineola, and Mayport & Anita. You may also see Terry volunteer his time cutting grass on our lots on Mayport Street and around the perimeter of our campus. He has repaired pot-holes in the parking lot, trimmed trees, and a bajillion other things. Although Terry & Denise have been members of Redeemer for a short time, since 2013, transferring from Zion Lutheran Church, Brainerd, MN, they have taken great joy in giving of their time to the care, physically and administratively, to their church – Redeemer Lutheran. Thank you Terry for loving Redeemer the only way you know how, with dedicated commitment to the Lord’s Church.



## PRAYERS



**SHUT-INS:** Carl & Betty Bertka, Alice Borowski, Susan Jahns, Betty Keller, Helen Perry, and Ruth Sutley.

**HEALING:** Mickie Abel, Wilma Adair, Family and Friends of Frank Demma, Pat Finkenbine, Bernice Heppner, Mark Horvath, Dave Johnson, Rita Kaufmann, Bob Mortenson, Bob Payne, Carolyn Plesner, Tom Poyer, Joyce Redding, Don & Bonnie Roussin, Duwayne Schoeneck, Lois Skinner, Fred Toth, and Robert Vickey.

**FRIENDS & RELATIVES:** Linny Aspery, Paul Badagliacca, Denise Bjornas Smith, Dick & Marilyn Bjornas, Bert Blackford, Grace Blum, Michelle Bernard, Bill Bowers, Jr., Dennis Burchell, Georgia Bush, Jack Carlos, Diane Carr, Debbie Carr, Esther Clapham, Bobbett Clark, Joanne Clymo, Martin Cressman, Renee Dempsey, Family and Friends of Robert Davis, Dale Desjardins, Irene DiTommaso, James Dodge, Barb Dumeah, Bruce Everson, Donna Fancher, Darla Finkenbine, Marla Flores, Lou Fountain, Denver Fredett, Manual Galan, Glenn Galway, Liam Garland, Sandra Gettings, Nancy Gleis, Shelley Roedel Gutz, Debbie Harrison, Larry Headun, Claudette Hendershot, Joel Heppner, Walter Heppner, Glory Herget, Joan Hillis, Robin Hincman,

David Hirtle, Larry Hladun, Carol Holmes, Linda Holt, John Hunter, Linda Hunter, Stanley & Lynne Jablonski, Bill Jaquest, Chris Johnson, Heather Johnson, Rachel Kagay, John Kearns, Rev. Michael Kettner, Elizabeth Lynn Klopfenstein, Stacey Lampert, Ray Likowski, Sean Maki, Joe Manson, Candace McGowan, Pete Mogg, John Montondo, Mike Morrissey, Charles Pentecost Jr., Margo Plamondon, John Purdy, Mary Raines, Rev. Ronald Rock, Ashley Scudder, Nancy Sly, Peter & Linda Smith, Virginia Stanley, Charles Tolley, Samantha Jo Ann Toth, Family and Friends of Gordon Tuttle, George Vespa, Steven Walker, Christy Wallace, Helen Weishaar, and Gordan Winkel.

**Military Personnel:** Mark Baranowsky, Michael Broughton, Brian Jackson, Joshua Jones, Jonathan Koen, David MacLeod, Steven Seigmundt, and Charles D. Weishaar.

**Pastor and members of the church are always willing to pray for you, family members and friends. If a loved one appears on our prayer list above, please call Pastor or the church office to give us a health update so that we may either keep or remove their name. Thank you!**

***The deadline for the May Newsletter is April 16th  
Please have all your submissions sent to redeemerfl@verizon.net OR drop it off at  
the church office to Deb by the date indicated above.  
Thank You!***



Date	Set-up	Take-down
<b>Sunday, April 3rd</b>	Gwen Wurster	Bernice Heppner Dottie LaMere
<b>Sunday, April 10th</b>	Sandi Libke Jane Harty	Lisa Kress Deb Horner
<b>Sunday, April 17th</b>	Bob Varone Gretchen Armstrong	Deb Horner Vicki Fernald
<b>Sunday, April 24th</b>	Lisa Kress	Bernice Heppner Carolyn Francis

## ICE CREAM SOCIAL

Once again it's that's time for our Annual Ice Cream Social sponsored by Redeemer Child Care and the Board of Community & Parish Fellowship. Join us with family and friends on Sunday, April 10<sup>th</sup> from 2-4PM for an afternoon of fellowship and fun. Create your favorite ice cream dish from the variety of toppings or indulge yourself with a good old "Black-cow" (Root beer poured over a cup filled with vanilla ice cream).



## PROPERTY APPRECIATION DAY

We sure could use some help on our Property Appreciations Days every month. There is outside work to do and cleaning and dusting that needs done inside the Church. If you can help, please come to the church and we will put you to work. **Our next Property Appreciation Day is April 9th at 8:00 AM.**



## SENIOR FELLOWSHIP

Everyone is invited to the Fellowship every Thursday, starting at 10:00AM. ***The more people attending, the more FUN we can have!!!*** The most popular things to play are: Pinochle, Phase 10, SkipBO, and Hand & Foot. We also have Dominoes or other games if they are requested. There must be something you would like to have fun with, so come on out. Once in awhile we have a special home made lunch but usually everyone brings a bag lunch. Drinks and dessert furnished.

## LWML—SPRING RALLY INFORMATION

The ladies of Faith Parrish, Florida, cordially invite you to the **Spring Rally** on Saturday, April 16, 2016.

9:00 AM Registration and Refreshments  
9:30 AM Program of Service and Communion

Registration is \$7.00 per person; Pastors and LWML District President may attend at no cost. All forms and money need to be returned no later than March 31, 2016. Please make checks payable to "Faith Lutheran Church". There is a sign up sheet in the Narthex on the Visitors Desk.



The **1st donation** will help defray expense for District Delegates. Cash or checks payable to "Faith Lutheran Church".

The **2nd donation** is a Love Offering for Hope Seeds, Inc. Cash or checks payable to "Hope Seeds, Inc."

**Guest Speaker: Bethany Matzke, Hope Seeds, Inc.** Her parents and the founders Mike and Jean Mueller encouraged her to join the family team to help spread the word of Plant A Seed! Feed A Soul!

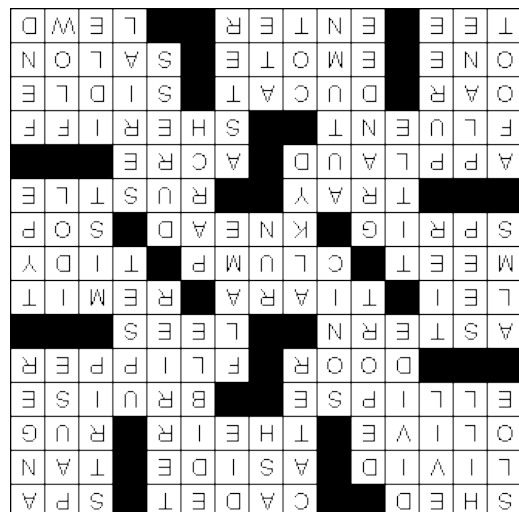
**Second Guest Speak: Peggy Kirnan, Solve Maternity Homes.** Donations of baby items will be collected.

## TO OUR NORTHERN MEMBERS, GUESTS, & VISITORS:

It is that time of year again when we again say good-bye to our northern brothers and sisters in Christ. We are so very sad to see you leave, but we are overjoyed in the number of weeks and months we shared together worshipping, working, and playing. Please contact the church office notifying us of the date of your departure and verification of your northern address in order that we may continue to correspond through our monthly newsletter and other publications. The Lord grant you safety while you travel.

## QUARTERLY VOTERS MEETING

On April 17<sup>th</sup>, following Diving Service, we will hold our April Quarterly Voters' Meeting. If you have not signed the Red Book, it will be available at the meeting. If you have any questions, please contact President, Steve Wurster.



## POSITION DESCRIPTIONS

Below are just a few of the positions which are vacant at this time. Please read the descriptions and prayerfully consider stepping up to fill one of these positions. Without the many wonderful and faithful volunteers, we would not be able to fully minister to our congregation and the community.

**SUNDAY SCHOOL SUPERINTENDENT:** The primary duties would be to coordinate the schedules for Sunday School teachers, prepare the materials & make sure they are available, review attendance and work with parents to encourage attendance and see if rides are needed (not to necessarily provide the rides, but to contact somebody who could); work with Pam Replinger to address any concerns of Sunday School teachers, and assist in Rally Day and Vacation Bible School as able.

**BOARD OF HUMAN CARE:** The Chair of this very critical board works closely with the Pastor to insure proper care to individual members and families of the congregation. The Board of Human Care is expansive as it gives attention to emotional, physical, psychological, and spiritual maladies of God's people. With the help of the Pastor, the Chair trains members of the Board of Human Care to make hospital visits as well as visits to the shut-in and the infirm. The Chair oversees a prayer-chain with members who are not connected to the internet to receive E-prayers. The Chair also assigns a Coordinator to other programs of mercy within the congregation, i.e. Monthly Blood Pressure, Disaster Preparedness, Stephen Ministries, Caring Network, Cards of Comfort, and Christian Support Groups. The Board of Human Care may also participate in community events, i.e. Blood Drives and Relay For Life. The Chair of this board is also required to attend the monthly Church Council Meeting (2<sup>nd</sup> Monday at 7 PM), and prepare a brief report of the board's work to the Council and to the Voters' Assembly each quarter.

**BOARD OF ASSIMILATION:** The Chair of this important board works with the Pastor and the Chairs of other boards and committees to integrate new members into the life of the congregation. The Chair monitors the guidelines for proper use of the visitor's desk in the narthex. The Chair delegates the following responsibilities to the members of the Board of Assimilation: Supply greeters for Sunday Church services; Provide 'visitor bags' for first time visitors to Redeemer before Sunday services; Provide New Member Packets for all incoming new members; Take pictures of all new members; Place pictures in New Member Showcase (located in the narthex); and Provide the Newsletter Editor with pictures of all new members. The Chair of this board is also required to attend the monthly Church Council Meeting (2<sup>nd</sup> Monday at 7 PM), and prepare a brief report of the board's work to the Council and to the Voters' Assembly each quarter.



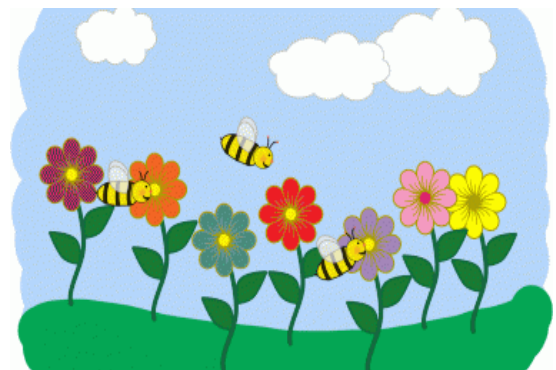
Redeemer Lutheran Church



Web—Church: [www.redeemerfl.com](http://www.redeemerfl.com)



Web—Child Care: [www.redeemerfl-cc.com](http://www.redeemerfl-cc.com)



## NEW CROSS DRAPERY



Many, many thanks go out to Pauline Vickey for making the new cross drapery for all our crosses, inside and out for Lenten and Easter Season. Lent (purple), Ash Wednesday and Good Friday (Black), and Easter (white).



## THE NEW FLOORING IN FELLOWSHIP HALL



As many of you know, our Fellowship Hall underwent a major project of installing new floors. This was made possible by many generous people. We thank the Endowment Committee for approving our request of \$13,000 to begin this task. We also thank the Yard Sale Committee who raised almost \$1,500 for the floor project. Our thanks also goes out to an anonymous donor of \$3,000 (you know who you are). And our thanks is extended to the Church Council for approving the remaining funds needed to complete the \$19,000 project.

At this time we would like to thank all the men and women who unselfishly gave of their time to help move and clean and put back together our Fellowship Hall. We thank Cathy Mielke, Wila & Ralph Bockstahler, Jim & Debbie Metzker, Joe & Paula Maramonte, Denise Fountain, Pauline Vickey, Harold Hale, Bob Varone, and others whose name we may have mistakenly forgotten.

However, before any of this came to being, many, many hours of meeting with flooring contractors and phone calls and emails were organized by an individual who deserves special recognition. Before we thank him, let's thank our President, Stephen Wurster who provided much guidance and oversight toward this project and the welfare of Redeemer congregation. So now we give special recognition to the key person of this entire project, our Vice President, Terry Fountain. We are all indebted to his dedication and leadership. Thank you, Terry, from the bottom of our hearts. The company hired for the job was Freedom Flooring from Sarasota, FL.



# Redeemer Child Care



## Bible Lessons

Chapel is on Mondays at  
3:45

4/4 Jesus Is Alive

John 21:1-14

4/11 Jesus Goes to Heaven

Acts 1:6-11

4/18 God Gives the Gift of the Holy Spirit

Acts 2:1-13

4/25 Disciples Give God's Gift of Mercy

Acts 3:1-10



Dear Jesus,  
Thank You for going to prepare a wonderful home for me in heaven. Help me to listen to your word while I wait for You to come again. Amen.

*Submitted by Wendy Horvath*

## Birthdays

Myah 4/1

Ms. Debra 4/9

Aaden 4/11

Olivia C. 4/14

Connor 4/23



Congratulations on  
your years of  
service!



Ms. Megan 3/3 One Year  
Ms. Lindsay 3/30 One Year  
Ms. Katie 4/25 Three Years

## Special Days in April

4/1 April Fool's Day  
4/6 Picture Day  
4/10 Ice Cream Social  
from 2-4 in the Fellowship Hall  
4/22 Earth Day

## What We Are Learning

4/4 Jesus Cooks Breakfast

4/11 The Ascension and Great Commission

4/18 Pentecost

4/25 Peter and John Heal a Crippled Man

Younger children will be doing a unit on Favorite Songs

## National Teacher's Day

May 3, 2015

This day honors those hard working, patient and understanding people whom we entrust our children to. Teachers mold our kids in a positive direction, affecting who they are and who they become. A Great Big Thank You To All the Redeemer Teachers!



## CLASSIFIEDS

### Lawn Care

Call Todd Armstrong at (941)961-7584 for your lawn care needs.

### Cleaning Services

CK-Clean LLC—Residential cleaning service—Kristine Bowers  
Baltimore (941) 681-6514



**WANTED/IN SEARCH OF:** The Church office is in need of a new filing cabinet!! If you, or someone you know, has a four drawer, letter size filing cabinet they would like to donate, please contact the office or Pastor. Thank you for your help!

**FREE** IF YOU WOULD LIKE TO ADVERTISE YOUR BUSINESS, HERE IS A GREAT OPPORTUNITY!!! We have limited space, but space available, for you to place your FREE advertisement. Please contact the Church office by phone or email if you would like to place an ad.

If anyone is missing any items, namely eyeglasses, gloves, umbrellas, etc., please check the Lost & Found box located in the narthex.

## GREETERS

## COFFEE HOUR

<i>April 3</i>	<i>TBA</i>
<i>April 10</i>	<i>Dottie LaMere Mae Anderson</i>
<i>April 17</i>	<i>Sally Zierdt</i>
<i>April 24</i>	<i>TBA</i>

*Submitted by*

**Greeters**  
Welcome Worshipers

<i>April 3</i>	<i>TBA</i>
<i>April 10</i>	<i>Carol Spooner</i>
<i>April 17</i>	<i>Anne Varone</i>
<i>April 24</i>	<i>TBA</i>

*Submitted by Brd. of  
Community &  
Parish Fellowship*

**Coffee Hour**

## PUZZLE PAGE

**Across**

- 1. Outbuilding
- 5. Military trainee
- 10. Health resort
- 13. Ashen
- 15. Stage whisper
- 16. Bronze
- 17. Mediterranean fruit
- 18. Belonging to them
- 19. Floor covering
- 20. Oval
- 22. Contusion
- 24. Entrance
- 25. Swimming shoe
- 26. Aft
- 29. Sediment
- 30. Hawaiian garland
- 31. Crown-like headdress
- 34. Send payment for
- 38. Encounter
- 40. Walk clumsily
- 42. Orderly
- 43. Small branch
- 45. Massage
- 47. Concession given to mollify
- 48. Salver
- 50. Steal cattle
- 52. Show appreciation
- 55. Land measure
- 56. Facile
- 57. Law officer
- 61. Paddle
- 62. Former European gold coin
- 65. Sashay
- 66. Single
- 67. Give expression to
- 68. Beauty parlor
- 69. Golf accessory
- 70. Go in
- 71. Salacious

1	2	3	4		5	6	7	8	9		10	11	12	
13				14		15					16			
17						18					19			
20					21			22		23				
			24					25						
26	27	28						29						
30				31		32	33			34		35	36	37
38			39		40				41		42			
43				44		45				46		47		
			48		49				50		51			
52	53	54							55					
56								57				58	59	60
61				62		63	64			65				
66				67						68				
69				70							71			

**Down**

- 1. Wild plum
- 2. Mound
- 3. Iniquity
- 4. Separate into parts
- 5. Provide
- 6. Type of tree
- 7. Perish
- 8. Fit to eat
- 9. Hunting dog
- 10. Airfield
- 11. Hesitate
- 12. Ire
- 14. Extradite
- 21. Relating to sound
- 23. Overturn
- 25. Fire
- 26. Voluntary contributions
- 27. Ooze
- 28. Level
- 32. Synthetic resin
- 33. Operate
- 35. Thin fog
- 36. Object of worship
- 37. Variety
- 39. Heading
- 41. Dry out
- 44. Spanish nobleman
- 46. Compulsory force
- 49. Fall
- 51. Successive
- 52. Walking
- 53. Woodworking tool
- 54. Prepare food by straining or blending
- 55. Daisylike flower
- 58. Not in active use
- 59. Current
- 60. Withstand the force of something
- 63. Crib
- 64. Consumed

***Solution on Page 14***

REDEEMER LUTHERAN  
CHURCH & CHILD CARE  
6970 Mineola Rd.  
Englewood, FL 34224

ADDRESS SERVICE  
REQUESTED - OPTION 1

NON PROFIT ORG.  
U.S. POSTAGE PAID  
PLACID, FL  
PERMIT 774



REDEEMER LUTHERAN  
CHURCH & CHILD CARE  
6465 Mayport Street  
Englewood, FL 34224

***REV. JAMES T. KRESS, SR.***

**Church Phone: 941-475-2410**

Church Fax: 941-475-9726

**Child Care Phone: 941-475-2631**

E-mail: redeemerfl@verizon.net

REDEEMER REPORTER

Published monthly for members, Associate Members and Visitors of Redeemer Lutheran Church a member congregation of the Lutheran Church Missouri Synod.

WORSHIP SERVICES:

Bible Study: 8:00 AM

Divine Service: 9:15 AM

Sunday School: 9:15 AM

CHURCH OFFICE PHONE: 941-475-2410

*The Redeemer Lutheran Church & Child Care Family are called into the service of our Lord and Savior Jesus Christ by His command (Matthew 28:18-20) to:*

- Disciple all nations, that is, all people;*
- Baptize in the name of the Father, Son and Holy Spirit;*
- Proclaim the Gospel and teach His Word in its truth and purity.*