

REDEEMER REPORTER

REDEEMER LUTHERAN CHURCH - FEBRUARY 2011

“Busy, Busy, Busy”

For being the shortest month of the year, February sure does pack a busy schedule.

Now that our community is in full-bloom – Northern friends have come back; work is busy with meeting the needs of customers; kids return to a full schedule at school – we at the church can relax for a while, at least until the season of Lent begins, right? Wrong!

We are ‘in season’ and that means this is our opportunity to bring a busy, but larger community together under the grace of our Lord Jesus Christ.

Yes, our lives are busy. Even for our retirement community of friends, they’re busy too; meeting appointments with doctors, reunions with old friends, and an occasional visit from family members from the north. To be sure, they’re just as busy as we are – it only appears they’re having more fun.

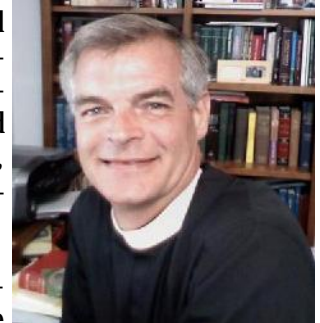
Entering into my second full-season here at Redeemer, I can’t help notice all the many visitors the Lord is sending our way. I do my best to call and meet with them as soon as possible, but guess what? It’s not always possible and not always soon enough.

As members or associate members of Redeemer, I could certainly use your help in this regard. Our Outreach Board is already working with me, but over the last two months, we have received more than 60 visitors who have searched Redeemer Lutheran Church out in order to worship with us.

What does this mean? I believe, as already stated above, the Lord God Almighty is sending us more and more of His people. This isn’t necessarily new to Redeemer. Year after year Redeemer has received many new members and associate members through the fact we are located in a community made up of predominantly retired people. Each year a new batch of individuals and couples consider our area as a place of retirement. Some retire late and some retire early, but the fact of the matter is, they seek out our area in which to go. And then – this is the good part – they seek out a church to call home; a church where they are welcomed; a church where God’s Word is taught in its purity and truth; a church where the Sacrament is rightly distributed according to Christ’s command; a church where they can become friends, Christian friends with you.

For most of us here at Redeemer, this is how we became members or associate members. We once lived and worked up north. We desired to retire and live in Florida when retirement came.

We sought out the Englewood area. The Lord led us to Redeemer. We have made Redeemer our church home and have developed wonderful, long-lasting Christian friendships. Thanks be to God!



With so many visiting Redeemer during this time of the year, and I trust the Lord will send more, can you imagine them gathered with us every Lord’s day under His grace in Word and Sacrament? Can you imagine the many more voices being raised up to God singing praises to His Holy Name? Can you imagine the many more members and associate members involved in the life of the church through participation on Boards and Committees? Can you imagine how much more laughter shared during Senior Fellowship, Ladies Guild, or Men’s Group? Can you imagine the possibilities God can create through this increased membership? Can you imagine Redeemer saying “YES” to hire a DCE or a Vicar or an Associate Pastor or the building of a Christian Day School because we can – because God has blessed us to do so? Can you imagine? (Sounds like it would make an inspiring song title).

Historically here at Redeemer, February has been the month in which we dedicate some of our attention to Stewardship. I encourage you to read Sarah Watkins Stewardship article on page three (3) in this newsletter. I support the direction in which the Stewardship Board would like to guide the members and associate members of Redeemer in regards to achieve a more clear understanding of Biblical Stewardship. Remember, stewardship isn’t ONLY about money. Stewardship is also about the talents, that is, the gifts the Lord has blessed you with, whether it be a seamstress, a woodworker, a clerical worker, a baker, or someone who can polish brass. These and the many other talents and gifts the Lord has blessed you with are the very things needed for the life of the church too.

Scheduled in our February calendar are Outreach and Evangelism Workshops held on Saturday, Feb. 19th and 26th. I also encourage you to read Carol Haupt’s Outreach article on page four (4) in this newsletter. The advertised workshops are not a repeat of the other. They are a continuous “How To” workshop divided into parts. However, if you are only

Continued on page 8

PRESIDENT'S CORNER

Pastor	Rev. James Kress
Child Care Director	Wendy Horvath
Office Secretary	Jennifer Steele
Organists	Bill Bowers Lanette Schmidt
Choir Director	Doris Dykhuizen

OFFICERS

President	Ed Sheahan
Vice President	
Treasurer	Pat Luedtke
Secretary	Dorothy Sinowetski

BOARDS

Head Elder	Tim Byrne
Assimilation	Jane Hoivik
Property Mgmt	Charlie Vovcsko
Christian Ed.	Pam Replinger
Human Care	Carol Sheahan
Outreach	Carol Haupt
School Board	Bill Bowers
Stewardship	Sarah Watkins
Youth	
Financial Secretary	Karen Kirkland

CLUBS/GUILDS

Ladies Guild	Doris Dykhuizen
Men's Group	Bob Mortenson
Christian Support	Margie Cypher

Well, we are off and running on the year 2011. As everyone is probably aware by now we completed the sound absorption project in the Fellowship Hall. Based on the feedback I've had from members of the congregation it was a huge success. The three contractors who performed the work were Davidson Insulation, Merrills Heating & AC and Able Electric. I have contacted all three companies and told them how pleased I was with their work and how happy the members of the congregation are with the results. Now we will begin seeking funding to do the smaller room.

We held a special voters meeting in December to discuss and vote upon the council recommendation that we self-insure the "Wind and Hail" portion of our insurance coverage. We had a very good discussion with much participation from the members in attendance. Everyone understood what brought us to the point of having to make this decision and the recommendation was approved. We are now in the process of choosing an investment product to begin reserve funding as we pledged to do.

At the voters meeting held on Sunday, January 16, 2011 we presented the revised Constitution and By-Laws for Redeemer. We are mandated by the constitution to review and if needed, revise the constitution every five years. Ray Altman, Earl Stuck and Margie Cypher put in many hours on this project and their efforts are obvious in the quality of the finished product. We all owe them a "THANK YOU" for taking on this difficult task. We will vote on accepting the revisions at our next scheduled voters meeting.

We still have vacancies on the council that really need to be filled. We need a Vice-President and a Youth Director. Please do some soul-searching and realize that it is not only a great help to the church and it's members to assume a leadership position but it is also very rewarding on both a personal and spiritual level. Please give serious consideration to accepting these responsibilities.

Submitted by Ed Sheahan



STEWARDSHIP

Hope, Strength, Commitment, and Opportunities

Bear with each other and forgive each other. Colossians 3:13

Working with the Stewardship Committee is still a relatively new experience for me. I began in late summer and I am learning from committee members and our pastor as we move through the months. It is now time for me and all other members of Redeemer Lutheran Church and Child Care (RLCCC) to consider what our financial commitment will be for 2011.

Last year we received covenant cards with which to challenge ourselves. About half of our members returned these self-addressed cards in sealed envelopes. Those of you who did so will receive your sealed 2010 card enclosed with the letter containing the new card for 2011. This will give you the opportunity to see how well you met your personal challenge in 2010 and to consider what you will set as your goal for 2011. These will go in the mail by January 31st.

Perhaps you (as I do) sometimes struggle with possessing a true biblical understanding of stewardship. If that is the case, our committee has set a goal for ourselves to work toward establishing a deeper under-

standing of stewardship for us all. In the early part of the year we are focusing on the importance of sharing ones treasure through our financial commitment to RLCCC. Then, in the following months we will aspire to communicate through the monthly newsletter, a greater understanding of the sharing of one's talents and time.



You may find it hard to settle upon how to be generous with your portions of *The Three T's of Time, Treasure, and*

Talent. And it is most certainly difficult to arrive at a balance in sharing them abundantly within our RLCCC family. In a recent conversation with the Stewardship Committee, Pastor Kress shared with us his personal commitment to sharing *first fruits*. In other words, instead of taking out our share first and giving what remains to the Lord—he stressed the importance of putting God's share first and then managing well with the blessings that remain.

As we all look into our hearts, our budgets, and our abilities, let us all simply do the best we can to keep RLCCC strong and growing. Our gifts, whatever they may be, are best shared. Stewardship in today's consumer oriented society may be harder to deal

with than ever before. Managing our time and money; living and working to meet our many responsibilities bring stresses that seem boundless. Finding a quiet moment to reflect upon God's goodness and many blessings takes enormous effort and prayer.

Sustaining our church; supporting it with our personal gifts, can bring each of us a special inner peace and the comfort that comes from the knowledge that you are giving back—that you are a unique part of a very special cause—our church and our church family. As 2011 marches forward, let us each make a personal promise to do the best that we can to provide RLCCC with the financial support it needs and deserves.

I'm not perfect. I keep working on being better and doing better. I'm going to—with God's help—do more in 2011 than in 2010. Please join me.

Wishing you HOPE, STRENGTH, COMMITMENT, AND OPPORTUNITIES—
Sarah Watkins

2011: As our hope remains in Christ, let us commit in strength to the Lord for all he has given.

From the Treasurer's Desk

2010 Church Actual vs. Budget Through December 31, 2010

OFFERINGS BUDGET
\$239,455.00

OFFERINGS RECEIVED
\$247,119.84

EXPENSES
\$232, 689.06

OUTREACH NEWS

“Therefore, go and make disciples of all nations, baptizing them in the name of the Father and of the Son and of the Holy Spirit, and teaching them to obey everything I have commanded you.”

COME AND SEE!

The Apostle John writes in the first chapter of his Gospel:

“Philip found Nathaniel and told him, ‘We have found the one Moses wrote about in the Law, and about whom the prophets also wrote—Jesus of Nazareth, the son of Joseph.’

‘Nazareth? Can anything good come from there?’ Nathaniel asked.

‘Come and see,’ said Philip.’

After Philip was called by Jesus, he found his friend Nathaniel, and told him the good news that he had found the Messiah. When Nathaniel disbelieved Philip's statement, Philip simply responded with, “COME AND SEE.” Nathaniel went with him to see Jesus, and the rest is history. Jesus revealed himself to Nathaniel and he became one of his disciples.

And that's all we have to do to do the work of a disciple of Jesus —invite our friends. Simply tell them, “Come and see.”

Invite them to come to church with you. God does the rest. As your friend sits in church with you, he or she will hear the Good News, the Word of God. The Holy Spirit through the Word will change your friend.

We will be having a special Friendship Sunday on March 6. Begin thinking about whom you could invite to “Come and see.” And then pray about it. Pray for courage to speak, to invite. Pray for your friend, that God will change their heart, and give them the gift of faith. But you don't have to wait for Friendship Sunday—every Sunday is Friendship Sunday! Every Sunday is an opportunity to invite a friend to “Come and See”.

OUTREACH NEWS

“HOW TO” Share Your Faith, with Strangers, with Friends, with Family

We will be having a *new* workshop on Saturdays, February 19 and February 26, from 9:00 to 12:00.

This workshop will not be like those we have done in recent years. Pastor Kress will be conducting this one and there will be lots of discussion on the “how to,” the nuts and bolts. How to approach a person, what to say, what to expect, engaging in conversation, inviting, etc. We believe this approach will be much more effective and helpful to you, our congregation, and the kingdom of God. Please pray about this and plan to come. Learn to share the wonderful gift of grace which has been given you.



Friendship Sunday – March 6

After we've learned “How To” invite friends and acquaintances at our February workshops, we will have special opportunity to bring them to church with you. COME AND SEE! Our friends will be welcomed by the congregation, and a reception will follow the services. Let's see how many “friends” we can bring.

Visitors

As you may know, Pastor makes every effort to visit each of our Sunday visitors within the week. This is a great blessing to our congregation. The Board of Out-

reach will now be helping Pastor with follow-up visits as needed. You may also have seen the Visitor Information Table in the Narthex. We have resumed this welcoming activity, and are again signing up regular visitors for temporary nametags. If you see someone wearing a temporary nametag, please make every effort to welcome them and incorporate them into our family. We are also encouraging them to seek Associate membership. We need help. Lately, there are too many visitors for our small Board to talk to on Sunday mornings. Please see Carol Haupt if you can help. If you like to talk, you're just the person we need.

FAITH SHARING STORY

Henry, a long-time member of Redeemer in Michigan, recently became active in the church again. As a past drug dealer himself, he knew many in his family who were unchurched. He invited his cousin, Adam, and their eight kids, to church. The free grace at the Lutheran church was their welcome invitation. They now bring another twenty or so family members and rejoice in the grace of our Lord Jesus Christ, learning that it is not only free of charge in church, but for eternity by the blood of Jesus.

(True story from LCMS Missions website.)

Jesus said to his disciples, *“The harvest is plentiful but the workers are few. Ask the Lord of the harvest, therefore, to send out workers into his harvest field.”* (Matthew 9:37-38)

Submitted by Carol Haupt

CHRISTIAN SUPPORT GROUP

We met on Wednesday, December 29th and had an informal meeting. The main topic was about the popular song "The Twelve Days of Christmas". The music relates to the years of 1558 to 1829, when the Roman Catholic Church was forbidden to openly practice the faith. Members of the Church developed ways to communicate the gift of faith in a coded song known as 'The Twelve Days of Christmas'. The 12 days were from December 25 (Christmas) until January 6 (Epiphany). For example the first day of Christmas is a partridge in a pear tree. The "partridge" is a symbol of Christ. The partridge will feign injury to protect nestlings that are defenseless, just as we are before Satan without Christ. The six geese a-laying represents the six days of creation. Each day represents a message such as the 10th day the "Ten Lords a-leaping refer to the "Ten Commandments". We discussed how fortunate we are today that we can openly discuss our beliefs. We prayed for our friends and family members, and closed with our "Lords Prayer" and friendship circle.

We are hoping you will help us to identify with a new name for the Christian Support Group that identifies much better with our program. We are a support group, a friendship group, a Bible refresher and study group and prayer group. We invite the members of the congregation, friends and members of the community to join with us on the last Wednesday of the month at 10:00 am in the quiet room of the narthex of the church.

Submitted by Margie Cypher

SUNDAY SCHOOL NEWS

The season of Epiphany presents us with the ministry of Jesus. It begins with Jesus Baptism and culminates with His transfiguration. The beginning of this season is marked by the celebration of the visit of the Magi to Jesus in Bethlehem. Epiphany means manifestation or to make known. The Holy Gospel readings, which are the Sunday School lessons for this season highlight Jesus' Baptism, His teaching in the temple as a young boy, and His miracles and healings-increasingly and ever more fully revealing Jesus as the promised Messiah. Please pay close attention to the materials your children come home with and ask them questions about the Savior! The Sunday School will be singing at the 10:30 AM service on January 30 and at the 10:30 AM service on Palm Sunday. Please join your child in church on these Sunday's and hear your child sing praises to Jesus.

Submitted by Lisa Kress



VOLUNTEERS NEEDED

Senior Fellowship

Volunteers are needed to bring a "hot dish" to the Thursday morning Senior Fellowship. There is a sign-up sheet in the office. We look forward to seeing you there and all your help is greatly appreciated! THANK YOU!

Newsletter

Monthly volunteers are needed for the folding of the newsletter. If you are able and willing, please contact the church office. Thank you so very much.

Nurses or medical personnel

please consider assisting with blood pressures on the last Sunday of every month. This is an inreach program of our human care ministry. This is one way of showing your loving care to our Redeemer congregation. Please contact Carol Carlos at 941-255-3354 or see you at church.

PRAYERS

SHUT-INS: Gloria Carlson, Evelyn Etheridge, Ruth Jansch, Jim Prather, and Ruth Sutley.

HEALING: Members: Marjorie Boliere, Bob Johnson, Larry Kappauf, Cliff Larsen, Gary Lute, Clara Mitchell, Leona Morrison, Jaye Nistendirk, Don Plesner, Robert Payne, Steve Procuk, Donald Roussin, Ed Sita, Mary Ann Sochacki, Marie Talley, Ronald Woller, Eileen Zwick.

Friends & Relatives: Lorraine Agens, Linny Aspery, Grace Blum, the family and friends of Wally Boyd, Georgia Bush, Raymond Carlos, Julie Carroll, Shirley Chattin, Bobbett Clark, Carly DeFeos, Renee Dempsey, John Denick, Manual Galan, Debbie Harrison, Larry Headun, Claudette Hendershot, Glory Herget, Bill Hillis, Robin Hincman, Casey Hoivik, Tom Holt, the family and friends of Fred Horvath, Bob Janmey, Douglas Johnson, Heather Johnson, Betty Kabert, Rachel Kagay, Julie Keck, Rev. Howie Krienke, Denise Lines, Elsie Malecki, Dan Mason, Joe Manson, Patrick McCord, Vinnie Meli, Pete Mogg, Kaye Gene Mortenson, Ann Nagel, Judy Nagel, Dan Niemann, Josh Niemann, Darwin Oliver, Charles Pentecost Jr., Mary Raines, Sherrie Rhoades, Donna Santora-Vovcsko, Audrey Slusher, Nancy Sly, Michael Stio, Eva Tabbitas, Phyllis Tucker, Helen Weishaar, Cindy Whitaker, Andrew Wolgast.

Military Personnel: Daniel Anderson, Matthew Anderson, Adam Buchner, Eric Byrne, Kevin Copeman, Christopher Dutch, Michael Garza, Courtney Gutenshwager, Christopher Hankins, Jonathan Hudson, Nathan Hudson, Brian Jackson, Keith Janssen, Josh Johnson, Joshua Jones, Eric Kieselburg, Jesse Krone, Michael Monson, Christian Mosser, Jeremy Schaitz, Brandon Smith, Jeremy Twombly, Katherine Utroska, Matthew Walenta, and Charles Weishaar.

FEBRUARY COFFEE HOUR

6th	Barbara Duff
13th	Ginny Doenges Diana Collins
20th	Clare Kieselburg Donna Antonelli
27th	Dee Baird Inge Tringalli

Provided by Assimilation

FEBRUARY GREETERS

6th	8:00 AM 10:30 AM	Ken & Cathy Mielke Cecil & Sybil Grahl
13th	8:00 AM 10:30 AM	Earl & Avis Stuck George & Elma Cancellieri
20th	8:00 AM 10:30 AM	Clare Kieselburg Donna Antonelli Paul & Vicky Davis
27th	8:00 AM 10:30 AM	Diana Collins Bob & Marion Buie

Provided by Assimilation

DANCING WITH THE STARS!!!

February 27th from 7:00 - 9:00 PM

SEE YOU THERE!!!

ELDER'S MESSAGE

THE CROSS/SIGN OF THE HOLY CROSS

Dear Brothers and Sisters in Christ,

The cross in all its various configurations date back to earliest times, among the Greeks and Romans. Investigators have found that the cross was widely known in pre-Christian times, being found on vestments, idols, buildings and monuments. Today it is universally accepted as a Christian symbol, adorning not only churches but also personal decorations in the form of necklaces, pins, etc.

The sign of the cross came into use in pre-Constantine time and generally was recognized by primitive Christians. Constantine ruled from 323 to 337 AD and was a convert to Christianity. In Matthew 28:18 we find these words: "Then Jesus came to them and said, 'All authority in heaven and on earth has been given to Me, therefore go and make disciples of all nations baptizing them in the name of the Father, and of the Son, and of the Holy Spirit.'"

Dr. Martin Luther teaches us in the *Small Catechism* to start and end our day by tracing on our bodies the same holy sign we first received when we were washed in Jesus name. When you get up and when you go to bed, make the sign of the holy cross and say: "In the name of the Father, and of the Son, and of the Holy Spirit. Amen."

Neither Luther nor his colleagues ever claimed to be starting a new religion. They were reformers, not protestors (Protestants). They never rebelled against the Church in Rome. They simply refused to compromise the truth in Holy Scripture. Luther was in fellowship with the Church in Rome for many years before he himself was excommunicated by the Pope.

When Lutherans are questioned as to why they do not sign, the answer usually given is, "It's too Romish," or "It's too much like Roman Catholic." Just think about it. A lot of things point to the sign being in existence long before the church or Popes. While only an outward sign, it expresses who we are, the righteous children of God, and that our Lord and Savior Jesus Christ confers this blessing on us at the beginning and at the end of the liturgy in the Divine Service.

Consider the words in the sign. A prayer in itself: In the name of the Father, who created me, in the name of the Son, who redeemed me, and in the Holy Spirit, who sanctifies me and resides in my heart.

With this sign we make a public confession of our personal faith. By faith we take and bind unto ourselves the strong and powerful name into which we are Baptized: the Father, the Son, and the Holy Spirit.

Yours in Christ,
George Cancellieri, Elder

ME, A PASTOR? ME A DEACONESS?

If you have found yourself asking this question, now is the time discuss your future! Rev. Andrew Yeager of Concordia Theological Seminary, Fort Wayne, Indiana, is going to be at Redeemer Lutheran Church Fellowship Hall on February 8th from 10 am to 1 pm. He will conduct the Tuesday morning Bible Class during its regular time with a study on Vocation, and then meet with those who have interest. Come and explore the possibilities! Men of all ages are invited, as are their wives, fiancées, and parents. Women interested in the deaconess program are also invited, along with their families. Conferences are individual and informal. Reservations are not required; however, if you are able, please phone Rev. Yeager at 260-452-2178 or his mobile at 260-449-0047 or feel free to e-mail him at yeagerat@ctsfw.deu to make an appointment.

SCRIP

February SCRIP orders will be taken Wednesday, February 2 at the Ladies Guild/LWML meeting and Sunday, February 6 after both services and returned the following Sunday, February 13. These gift cards make great gifts any time of the year. March orders will be taken Wednesday, March 2 at the Ladies Guild/LWML meeting and Sunday, March 6 after both services. These orders will be returned Sunday, March 13. SCRIP is a substitute for money. They are gift cards for everything from fast food restaurants, grocery stores, department stores, gasoline, movies, to office supply stores and many, many more. Each month an updated list is on the narthex desk. Everyone who is interested should pick up a copy and see what is available. The percentage the Ladies Guild/LWML earns is based on the amount of SCRIP orders for the month. These earnings are used for our Mission Projects. Your support is appreciated. If you have any questions, call Sybil Grahl at 475-0263.

CLASSIFIEDS

Beautician/Manicurist	Debbie Balogh Linda Pontello	Purple Palace Purple Palace	941-475-0731 941-475-0731
Painter/Handyman	If it's broken, I can fix it. Satisfaction Guaranteed. Please call John Toth - Home: 941-697-1670, Cell: 941-875-6191.		
Sales—Rentals	Pineapple Gulf Properties—Glenda McDorman, Owner/Broker (Lessie Kirch's Daughter) 880 S. McCall Road Englewood, FL 34223 . Office: 941-473-0300, Cell: 941-330-7922.		
Insurance	For all your insurance needs, contact Lisa Kress at State Farm! 941-548-2205		
For Sale	Like new, excellent condition shuffle board (ten feet long) Original purchase price was \$375 and is being sold for \$75, a great deal. Please call Judy Scarangella at 460-9155 if interested.		

“Busy, Busy, Busy” - Continued from page 1

able to make one of the workshops, attending one is better than none. You can always receive information from those who attend both workshop sessions. Briefly stated, the workshops will help us to share our faith with strangers, friends, and family members respectfully in that order. Why? Sharing your faith with a stranger is easier than sharing your faith with a friend. Once you have mastered the art of sharing your faith with a stranger, you can now be confident in sharing your faith with a friend or co-worker or neighbor. And once you have mastered that, that's right, you are more equipped and self-assured to share your faith with a family member, who incidentally is the most difficult audience to share your faith with because there's so much at stake. Please prayerfully consider attending these workshops. It may not change your life, but the life of a stranger, co-worker, neighbor, friend, or family member may be depending on it.

So the next time you come to church, please introduce yourself with an extended hand of welcome to someone you don't know. Your kind gesture just might be another reason for the visitor to stay and return again rather than leave and never come back. I am greatly appreciative of your love and cooperation as we work together, with the help of God, toward the increase of His kingdom. Let's get busy.

In His Service,
Pastor Kress

“All who call on God in true faith, earnestly from the heart, will certainly be heard, and will receive what they have asked and desired.” - Martin Luther

“Let the wife make the husband glad to come home, and let him make her sorry to see him leave.” - Martin Luther

“You are not only responsible for what you say, but also for what you do not say.” - Martin Luther

REMINDER

The Newsletter deadline for next month is March 20th. Please have all your submissions to the church office by that time.

CHILD CARE NEWS

ENROLLMENT IS 86 CHILDREN

Bible Lessons

Chapel is on Mondays at
3:45

2/7 Jesus Teaches about
Birds and Flowers

Luke 12:22-32

2/14 Jesus Teaches the
Disciples to pray

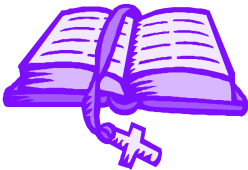
Matthew 6:9-15; Luke 11:1-13

2/21 Jesus Stops a Storm

Matthew 8:23-27

2/28 Jesus feeds 5,000

John 6:1-13



Give thanks to the Lord, for
He is good.

Psalms 107:1

Birthdays

Olivia 2/3

Donovan R. 2/9

Ariana 2/12

Valen 2/14

Hajnalka 2/20

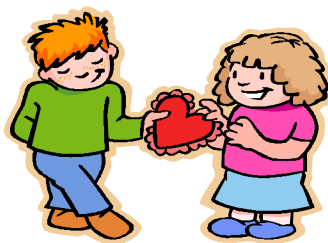
Jackie 2/24

Jordan 2/28



Welcome to Redeemer Child Care

New Students: Braeden and
Leon



Happy Valentines Day!

What We Are Learning...

Jan 31-Feb 11 Traditional
Tales (Folk Stories)

Feb 14-18 Valentine's Day

Feb 21-March 4 Wheels
And Wings (Transportation)

Needed Supplies

Snacks, Batteries, Paper
Towels, Bleach, Baby Wipes
& craft supplies.

A Great Big Thank You!

A great big thank you to Mr.
Larry Kappauf for coming in
twice a week to teach the
bible lesson!

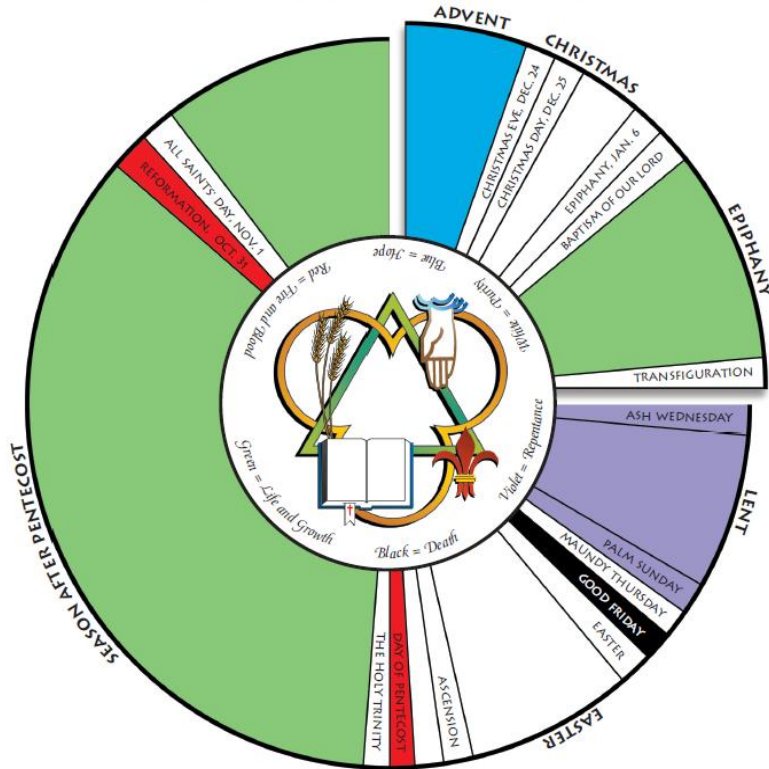
Submitted by Wendy Horvath

Colors of the Liturgical Year

The Church Year

- Blue** Hope and anticipation
- White** Purity, joy, and completeness
- Green** Growth and fulfillment
- Purple** Royalty and penitence
- Scarlet** Christ's Passion
- Red** Blood and fire
- Black** Ashes and repentance

- Advent **Blue/Purple**
- Christmas **White**
- Epiphany Sunday **White**
- Sundays after Epiphany **Green**
- Lent **Purple**
- Holy Week **Scarlet/Purple**
- Good Friday **Black**
- Easter Season **White/Gold**
- Pentecost Sunday **Red**
- Trinity Sunday **White**
- Season after Pentecost **Green**



WOMEN'S BIBLE STUDY

The Women's Bible Study Series '*Great Women of the Bible*' continues at 6pm on February 10, 2011, in the Fellowship Hall. Our February study focuses on the life of Sarah, one of the most prominent women in the Old Testament. The New Testament points to Sarah as a shining example of faith and as a role model for Christian women. Between Eve and the Virgin Mary, Sarah is the only woman God promises to become a foremother of Christ. Come join us as we consider the life & times of this Great Woman of the Bible; discovering how her story strengthens & comforts faithful women today. Materials for this Study Series are available at the Church Office, and will also be available on February 10th.



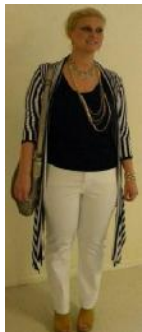
A SPECIAL THANK YOU

Dear Beloved in Christ,

Thank you so much for the very for the cards and gifts that you blessed us with at Christmas. We truly enjoy spending time with you at Christmas at our home and we appreciate your kindness and generosity. God's richest blessings to each of you! Pastor and Lisa



LADIES GUILD/LWML 2011 STYLE SHOW



LADIES GUILD/LWML 2011 STYLE SHOW



LADIES GUILD/LWML

Our next Ladies Guild/LWML meeting will be February 2, 2011 at 12:30 for coffee and dessert. Vicky Davis will present an informational program about the Lutheran Women's Missionary League and all of the wonderful projects they fund. Please join us and find out where all of those "Mites" go.

Last month our program chairman, Margie Cypher invited two ladies from Englewood Hospital who informed us of their volunteer program and the many ways we can take advantage of these programs and community events. There are many social events with their H2U program such as cards, bingo, exercise and trips. If interested you may contact Gale West at 941-473-5048.

Our members prepared several Advent and Lenten suppers last year, ran a "Treats and Treasures" sale and held the annual "Style Show". Because of all of these events, our ladies are donating \$500 to the Carlos missionaries and \$500 to the Child Care for playground equipment. We were also able to give a nice donation to the "Angel Scholarship Fund".

We are asking our members to walk together at the CROP WALK on March 5th. Registration begins at 8am, then an invocation and the walk. Please join us.

Submitted by Carol Sheahan



HUMAN CARE

The next two events for Human Care will be the BLOOD DRAW on February 13th and the CROP WALK on March 5th.

Our last Blood Draw on December 19th had 6 donors and the previous draw in October had 14 donors. If you are at least 16 years old, weigh more than 102 pounds and are in good health you probably can donate. If you have never donated before and you have questions you may contact the Florida Blood Centers. There is no substitute for blood. It has to come from one person in order to give to another. A critical number of voluntary donations are required every day to meet the need for blood. Presently the blood centers are falling short and are asking for your support.

If you take Coumadin or have an iron deficiency you may not donate but many medications are now on the "acceptable" list.

The Big Red Bus will be in our parking lot February 13th from 8:30am to 1:00pm. It takes approximately one hour to answer

questions on your health, get a mini check-up and the donation. Afterwards they'll give you juice and cookies and a tee-shirt and a lot of "thank-yous".

If you would like to make an appointment please call Carol at 941-875-6616 or email budandcarol@comcast.net. I will also be taking appointments between services on February 6th. Walk-ins are welcome.

CROP Walk will be March 5th and we'll have more information coming out soon.

Senior Fellowship meets every Thursday from 10am until 12:00 noon and we're asking for volunteers to fix a lunch, salad or dessert for 22 people. Please sign up in the church office. You are always welcome to stop by to play cards or various board games and stay for lunch.

Submitted by Carol Sheahan

THANK YOU FROM THE LADIES GUILD/LWML

The Ladies Guild/LWML hosted our annual Style Show and Lunch Friday, January 21 with fashions from Patchington's of Venice. The event was a sell out. Many thanks to all who attended. Numerous people helped with the various tasks involved in making the event a success. A great big THANK YOU to each of you. The proceeds will go to our Love Gifts which include Fish of Englewood, SOLVE, Englewood Meals on Wheels, Englewood Helping Hands, Loveland Center-Venice, Lutheran Bible Translators, Lutheran Prison Ministry, LCMS World Mission, Orphan Grain Train, and Carlos Missionaries.

Submitted by Ellie Ratzlaff and Sybil Grahl, Co-Chairmen

REDEEMER LUTHERAN CHURCH
6970 Mineola Road
Englewood, FL 34224

NON PROFIT ORG.
U.S. POSTAGE PAID
PLACIDA, FL
PERMIT 774



REDEEMER
LUTHERAN CHURCH
6465 Mayport Road
Englewood, FL 34224

REV. JAMEST. KRESS, SR.

REDEEMER REPORTER

Published monthly for Members, Associate Members
and Visitors of Redeemer Lutheran Church (LCMS).

WORSHIP SERVICES:

October - April: 8:00 AM & 10:30 AM

Adult Bible Study and Sunday School: 9:15 AM

CHURCH OFFICE PHONE: 941-475-2410

*We, the members of Redeemer Lutheran Church are called into the service of our Lord by
receiving His command (Matthew 28: 18-20):*

- Making disciples of all nations/peoples*
- Baptizing them in the name of the Father, Son and Holy Spirit.*
- Proclaiming the Gospel and teaching the Word.*

Christ's love for us compels us to serve our brothers and sisters as He served us